

CERTIFICATE OF ANALYSIS

ISO/IEC 17025:2017 ACCREDITATION #103104



Order #: 73154
 Order Name: RELAX
 TINCTURE
 Batch#: TIN118RX
 Received: 03/09/2021
 Completed: 04/14/2021

Raw Botanics, LLC
 1013 Clipper Court
 Del Mar CA, 92014
 (619) 379-0007
 Kristen@pmadcorp.com



Sample



N/D
D9-THC

3.262%
Total CBD

1,009.8 mg
Cannabinoids per unit

924.7 mg
CBD per unit

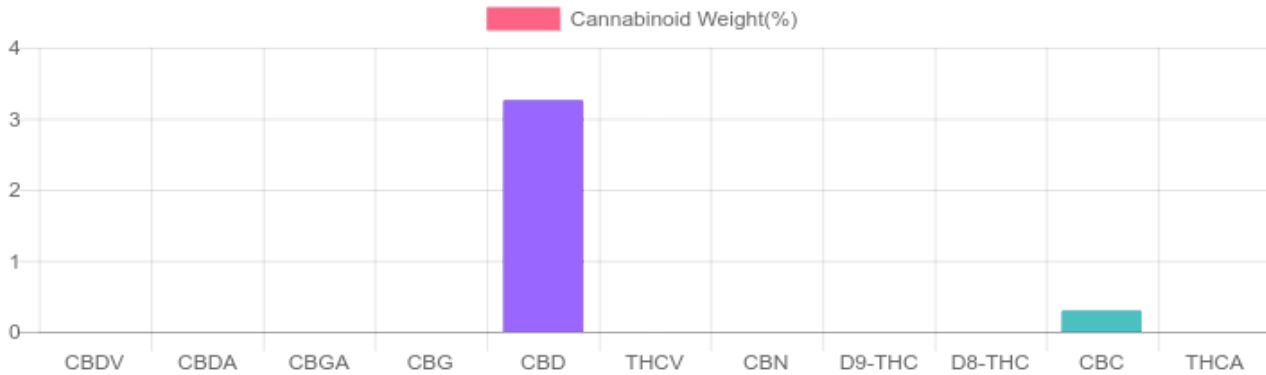
Cannabinoids Test

SHIMADZU INTEGRATED UPLC-PDA
 GSL SOP 400

UPLOADED: 03/12/2021 10:42:01

Cannabinoids	LOQ	weight(%)	mg/g	mg/unit
D9-THC	10 PPM	N/D	N/D	N/D
THCA	10 PPM	N/D	N/D	N/D
CBD	10 PPM	3.262%	32.617	924.692
CBDA	20 PPM	N/D	N/D	N/D
CBDV	20 PPM	N/D	N/D	N/D
CBC	10 PPM	0.300%	3.001	85.078
CBN	10 PPM	N/D	N/D	N/D
CBG	10 PPM	N/D	N/D	N/D
CBGA	20 PPM	N/D	N/D	N/D
D8-THC	10 PPM	N/D	N/D	N/D
THCV	10 PPM	N/D	N/D	N/D
TOTAL D9-THC		N/D	N/D	N/D
TOTAL CBD*		3.262%	32.617	924.7
TOTAL CANNABINOIDS		3.562%	35.618	1,009.8

1 unit = 30 ml per unit x density (.945) x
 Cannabinoid concentration



Reporting Limit 10 ppm
 *Total CBD = CBD + CBDA x 0.877
 N/D - Not Detected, B/LOQ - Below Limit of Quantification

Dr. Andrew Hall, Ph.D., Chief Scientific Officer

Ben Witten, MS, MT., Lab Director

Green Scientific Labs
 info@greenscientificlabs.com
 1-833 TEST CBD



Green Scientific Labs uses its best efforts to deliver high quality results and to verify that the data contained therein are based on sound scientific judgment and levels listed are guidelines only and all data was reported based on standard laboratory procedures and deviations. However Green Scientific Labs makes no warranties or claims to that effect and further shall not be liable for any damage or misrepresentation that may result from the use or misuse of the data contained herein in any way. Further, Green Scientific Labs makes no claims regarding representations of the analyzed sample to the larger batch from which it was taken. Data and information in this report are intended solely for the individual(s) for whom samples were submitted and as part of our strict confidentiality policy, Green Scientific Labs can only discuss results with the original client of record.

CERTIFICATE OF ANALYSIS

ISO/IEC 17025:2017 ACCREDITATION #103104



Order #: 73154
 Order Name: RELAX
 TINCTURE
 Batch#: TIN118RX
 Received: 03/09/2021
 Completed: 04/14/2021

Raw Botantics, LLC
 1013 Clipper Court
 Del Mar CA, 92014
 (619) 379-0007
 Kristen@pmadcorp.com



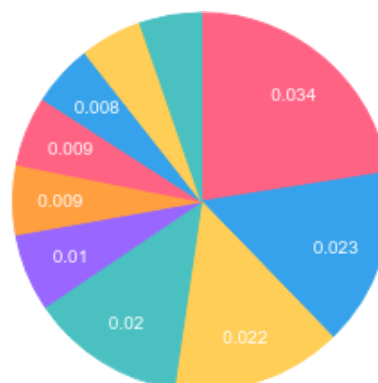
TERPENES: TOTAL (0.156%)

Headspace GCMS - Shimadzu GCMS QP2020 with HS20

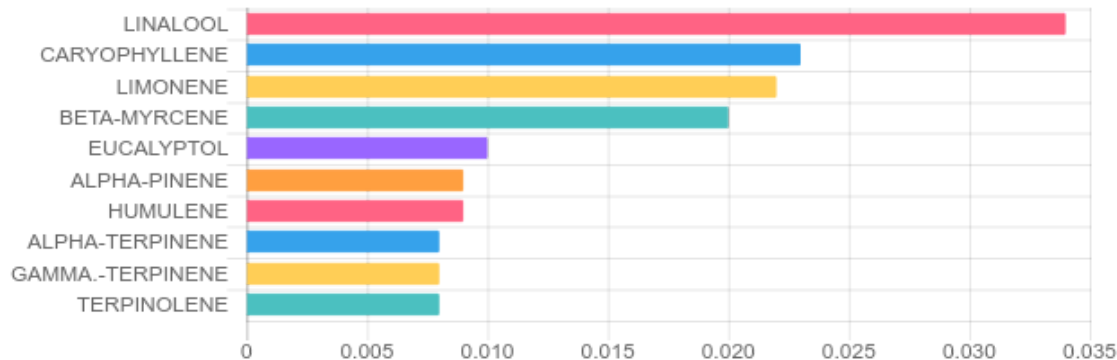
GSL SOP 404
 Prepared: 04/13/2021 20:47:16
 Uploaded: 04/14/2021 11:45:55

Terpene	Results (%)	LOQ (%)	LOD (%)
ALPHA-PINENE	0.009%	0.0067%	0.0063%
ALPHA-TERPINENE	0.008%	0.0067%	0.0063%
BETA-MYRCENE	0.020%	0.0067%	0.0063%
CARYOPHYLLENE	0.023%	0.0067%	0.0063%
EUCALYPTOL	0.010%	0.0067%	0.0063%
GAMMA.-TERPINENE	0.008%	0.0067%	0.0016%
HUMULENE	0.009%	0.0067%	0.0063%
LIMONENE	0.022%	0.0067%	0.0063%
LINALOOL	0.034%	0.0067%	0.0063%
P-CYMENE	B/LOQ	0.0067%	0.0063%
TERPINOLENE	0.008%	0.0067%	0.0063%

Terpenes Breakdown



Top Terpenes Results:



Tested for but not present:

CAMPHENE, BETA-PINENE, 3-CARENE, TRANS-BETA-OCIMENE, CIS-BETA-OCIMENE, ISOPULEGOL, GERANIOL, CIS-NEROLIDOL, TRANS-NEROLIDOL, GUAJOL, CARYOPHYLLENE OXIDE, ALPHA-BISABOLOL

Dr. Andrew Hall, Ph.D., Chief Scientific Officer

Ben Witten, MS, MT., Lab Director

Green Scientific Labs
 info@greenscientificlabs.com
 1-833 TEST CBD



Green Scientific Labs uses its best efforts to deliver high quality results and to verify that the data contained therein are based on sound scientific judgment and levels listed are guidelines only and all data was reported based on standard laboratory procedures and deviations. However Green Scientific Labs makes no warranties or claims to that effect and further shall not be liable for any damage or misrepresentation that may result from the use or misuse of the data contained herein in any way. Further, Green Scientific Labs makes no claims regarding representations of the analyzed sample to the larger batch from which it was taken. Data and information in this report are intended solely for the individual(s) for whom samples were submitted and as part of our strict confidentiality policy, Green Scientific Labs can only discuss results with the original client of record.